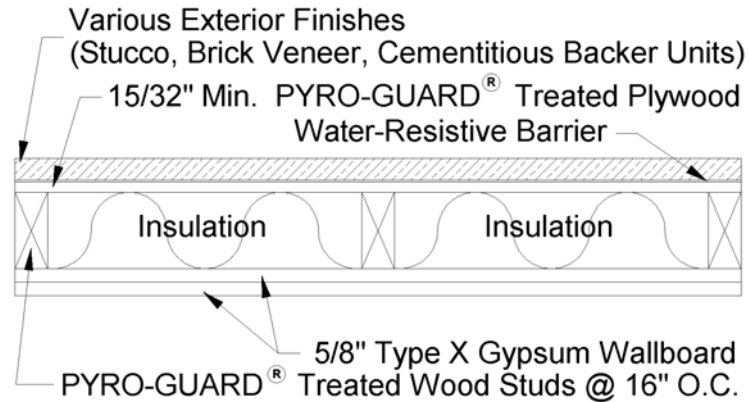


FIGURE 3: 2-HOUR FIRE-RESISTANCE RATED EXTERIOR WALL ASSEMBLY

Use where wall is required to be rated from the exterior and interior sides.



INTERIOR SIDE: Base layer $\frac{5}{8}$ inch (15.88 mm) type X gypsum wallboard applied parallel to studs with 6d coated nails, 1- $\frac{7}{8}$ inch (228.6 mm) long, 0.0915 inch (2.48 mm) shank, $\frac{1}{4}$ inch (6.35 mm) heads, 12 inches (304.8 mm) o.c. Face layer $\frac{5}{8}$ inch (15.88 mm) type X gypsum wallboard applied at right angles to studs with 8d coated nails, 2- $\frac{3}{8}$ inch long, 0.113 inch (2.87 mm) shank, $\frac{9}{32}$ inch (7.14 mm) heads, 8 inches (203.2 mm) o.c. at edges and 12 inches (304.8 mm) o.c. at intermediate studs. **(LOAD-BEARING, 100% of Calculated Design Load)**

STUD CAVITY: Spaces between the studs are completely filled with rockwool or slag mineral wool batts weighing not less than 3.3 pounds per cubic foot (1 pound per square foot of wall surface).

EXTERIOR SIDE: Pyro-Guard Treated Plywood fastened at 6 inches (152.4 mm) on center at edges and 12 inches (304.8 mm) on center in the field covered with a water resistive barrier.

EXTERIOR FINISH: Minimum $\frac{3}{4}$ inch stucco installed and reinforced per manufacturer instructions, minimum $\frac{3}{4}$ -inch thick full course brick or stone finish, combination of minimum $\frac{1}{2}$ -inch noncombustible veneer (stone, brick, tile etc) with a minimum $\frac{1}{2}$ -inch backer unit.