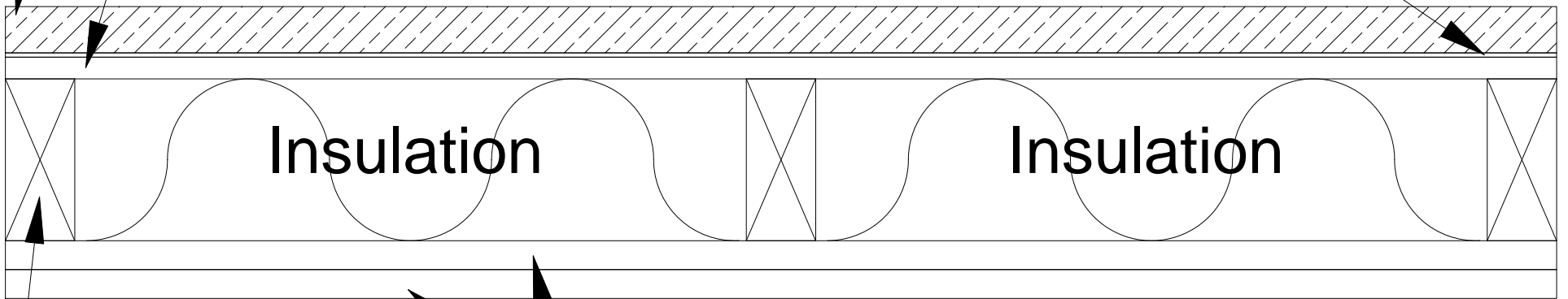


Various Exterior Finishes
(Stucco, Brick Veneer, Cementitious Backer Units)

15/32" Min. PYRO-GUARD[®] Treated Plywood
Water-Resistive Barrier



Insulation

Insulation

5/8" Type X Gypsum Wallboard
PYRO-GUARD[®] Treated Wood Studs @ 16" O.C.